

Protecting Your Investment Against The Unknown With Liebert Monitoring





Emerson Network Power, a division of Emerson, is a global company that combines technology with design to supply innovative solutions for the benefit of its customers.

Emerson Network Power is the leader in the “**business-critical continuity**” field, thanks to the company’s products and services.

Emerson Network Power’s broad technology base and global expertise support a full spectrum of enterprise-wide solutions for today’s vital business needs.



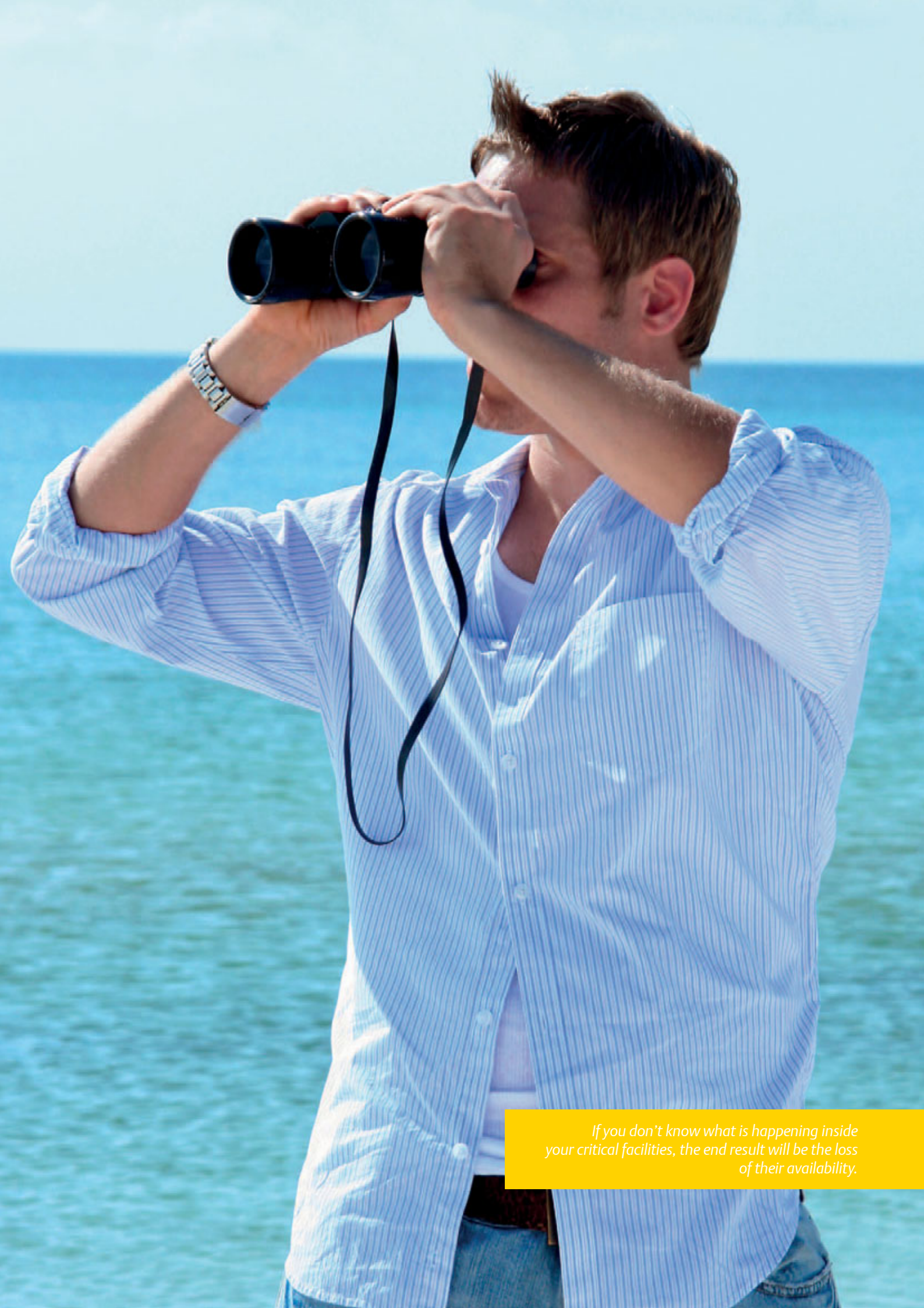
Regardless of your size, you can’t afford for your critical business systems to go down and you can’t waste time recovering your IT infrastructure after a disruption.

Leave that to us, the experts in *business-critical continuity*: from grid to chip, from the biggest to the smallest data centers, we are ready to serve your needs with the solutions we have developed.

More standardization, so you don’t need further budget allocations to install it. More simplification so you don’t need to be a specialist to get the best for your business. More support, so while you are enjoying doing business, we are protecting you.

That’s why we can say we OptimizeIT!





If you don't know what is happening inside your critical facilities, the end result will be the loss of their availability.



Understanding the conditions to be prepared for the unforeseen

This is what happens when managing a data center: the IT Manager's crew made of the Monitoring Products at his/her disposal must perform with perfect synergy to guarantee business continuity.

In data center management the stakes are high, and IT Managers need to have the right tools to avoid the unforeseen or be able to face in the cases in which it is unavoidable. Monitoring is fundamental in order to do so. As a consequence trust, confidence and team spirit are key and get even stronger. Each member of the crew has specific skills and tasks all complementary to those of the others. This generates synergy through a coordinated effort, which allows maximizing everybody's strengths and minimizing everybody's weaknesses.

Need To Keep The Attention High

Liebert has built advanced monitoring and communications capabilities into every product. Our monitoring and control

products allow you to take full advantage of these features. You will find a broad range of monitoring and control systems, communications modules and other equipment designed to interface with a variety of communication protocols, operating platforms and building management systems.



Getting the information you need to know about critical support equipment for IT systems has never been easier or more cost-efficient.



Liebert MultiLink[®] Automated Shutdown Software: Your Preserver Against The Unpredictable

As the life preserver for sailing, in IT environments the shutdown software can help you to protect your critical server from data loss or hardware damages thus minimizing downtime.

Conditions Might Change All Of A Sudden

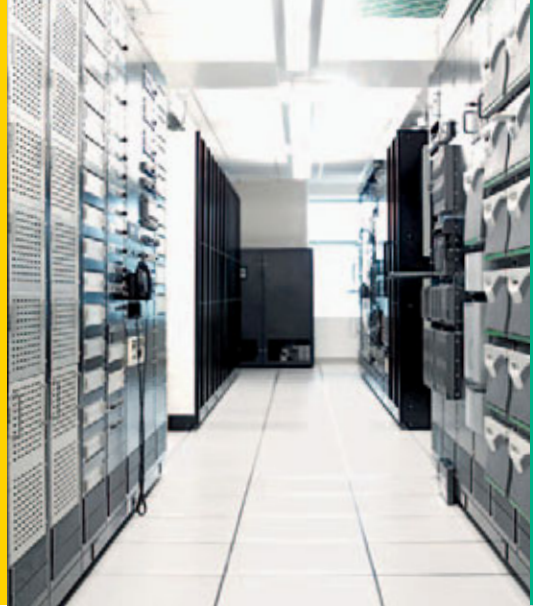
Even in the quietest sailing conditions unexpected events such as bad weather conditions, technical issues, etc. may occur and quickly turn into a disaster. Simple objects like a life preserver are extremely important to save one's life.

Liebert MultiLink[®] software constantly monitors a Liebert UPS, warns computer users of pending power loss, and initiates graceful operating system shutdowns when needed—from single computers to large networks.

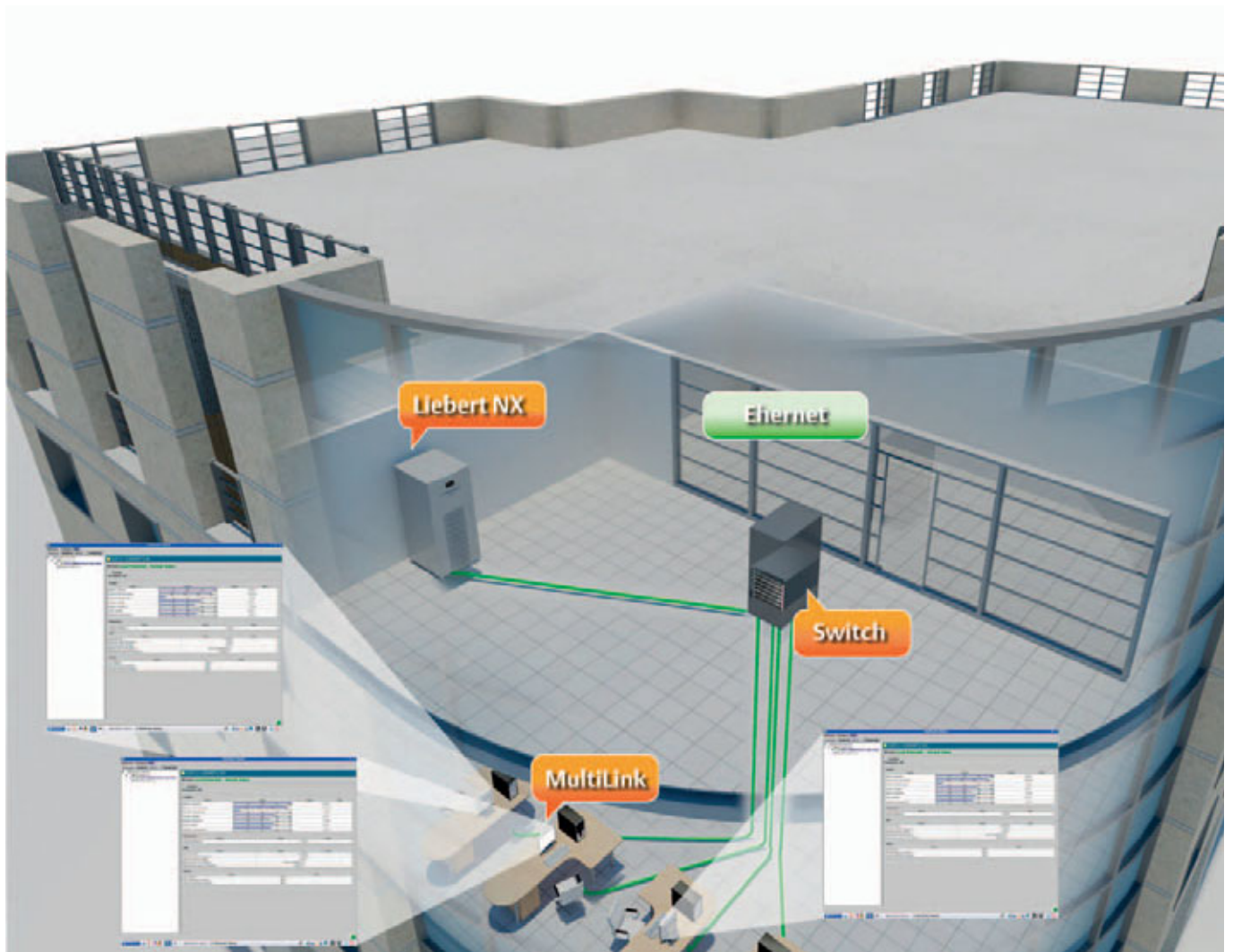
The software permits configurable responses to UPS status changes, including support for email, pagers, audio and on-screen notification.

The software provides unattended, orderly shutdown for one computer or many, and is especially effective with large server farms.

Available for most popular operating systems, Liebert MultiLink[®] has full event management and displays UPS instrumentation on-screen.



SUITABLE FOR POWER





Liebert SiMon Embedded Simple Web Monitoring

They are vital to compare performance with target speed, to calculate time, to lay lines and many other items crucial to increase your probability of winning. As the saying goes, “If you don’t monitor it, you can’t improve it”. This is why even a simple instrument may be crucial for your business.

The Right Instruments Are Vital For Your Success

Simple sailing instruments do not replace your senses, they enhance and validate them. They also provide information about things you cannot sense directly, e.g. true wind force and current.

Available for Liebert HPM and Liebert HPC precision cooling units, Liebert SiMon is an integrated web based monitoring tool which delivers basic information on the status of networked units in a very simple manner. Information is available through a standard web browser in an easy and immediate text format.

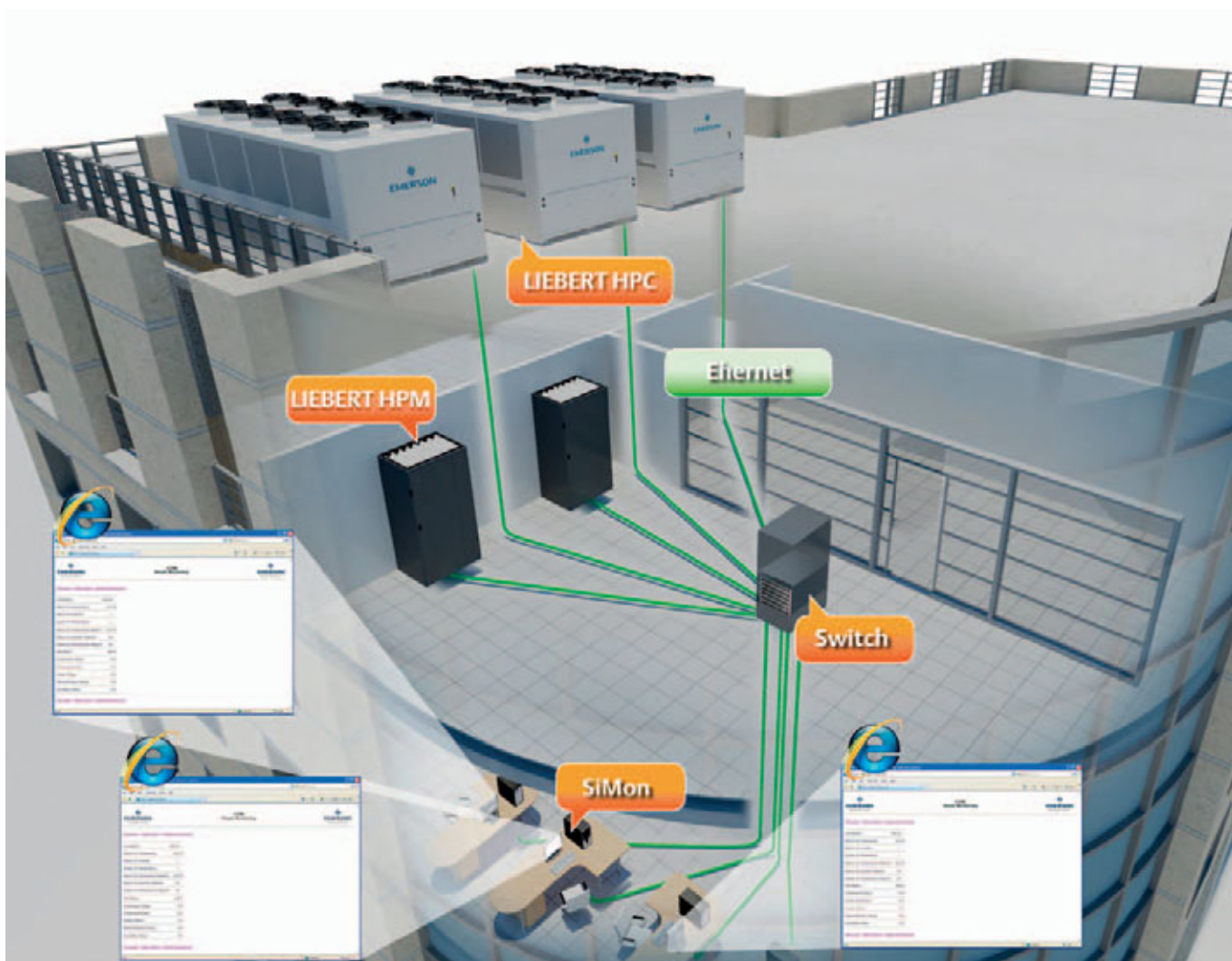
Three different web pages show: unit condition overview, status, return air temperature.

It only requires a standard Ethernet connection to the existing customer’s network.

Targeted to those customers who need a plug & play and basic monitoring solution, Liebert SiMon is the ideal solution the get the most with little investment.



SUITABLE FOR COOLING





Liebert iCOM™ - Intelligent Communications & Monitoring Graphic Display

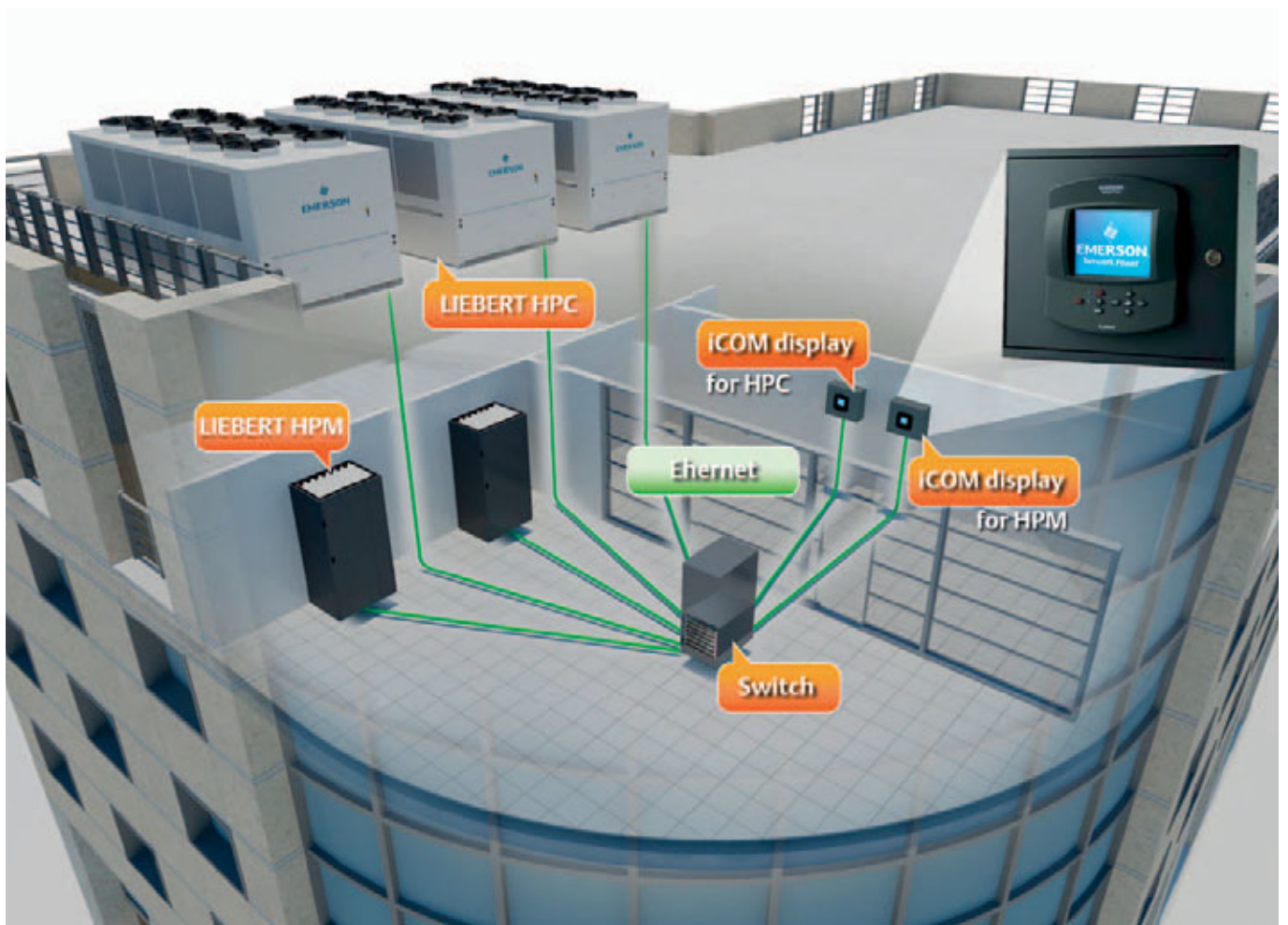
Independent And Complete Control At Your Finger Tip

In any critical applications there will be different users requiring different types of important information that can be critical to the operation of your facility. The access to this information can be different, if the right piece of information doesn't get to the right people in the right way it may end up being worthless. Problems can be solved in many ways, but the best solutions usually start with good information delivered quickly.

Available for Liebert HPM and Liebert HPC cooling units, The Liebert iCOM™ Large Graphic Display is a 320x240 dot matrix graphic monitor display with control keys. The Liebert iCOM Large Graphic Display allows local and remote monitoring and control of single or multiple units. It is the ideal solution for the supervision of units working together as a single system in order to optimize room performance. The Liebert iCOM Large Graphic Display works as completely independent component, which means that it only requires a connection to the existing network (LAN).



SUITABLE FOR COOLING





Liebert Nform Centralizes The Management Of Your Distributed Liebert Network Equipment

Advanced Technology Sometimes Can Be The Only Chance

All equipment connected to an existing or a dedicated network infrastructure can be monitored and controlled from a single point providing all those information and control capabilities to operate properly your boat.

A unique console put all you need at your finger tips.

This software solution combines full-scale monitoring with cost-effective deployment through the use of the existing network infrastructure.

It is both scalable and adaptable so it can grow as your systems expand and business needs change

Liebert Nform software solution combines full-scale monitoring with cost effective deployment through the use of the existing network infrastructure-so the cost of dedicated communications cabling is eliminated. It is both scalable and adaptable so it can grow as your systems expand and needs change.

The software can be configured to monitor, control and notify alarms that occur on Ac Power and Precision Cooling units. Each unit must be equipped with its specific network adapter.

Liebert Nform 4.0

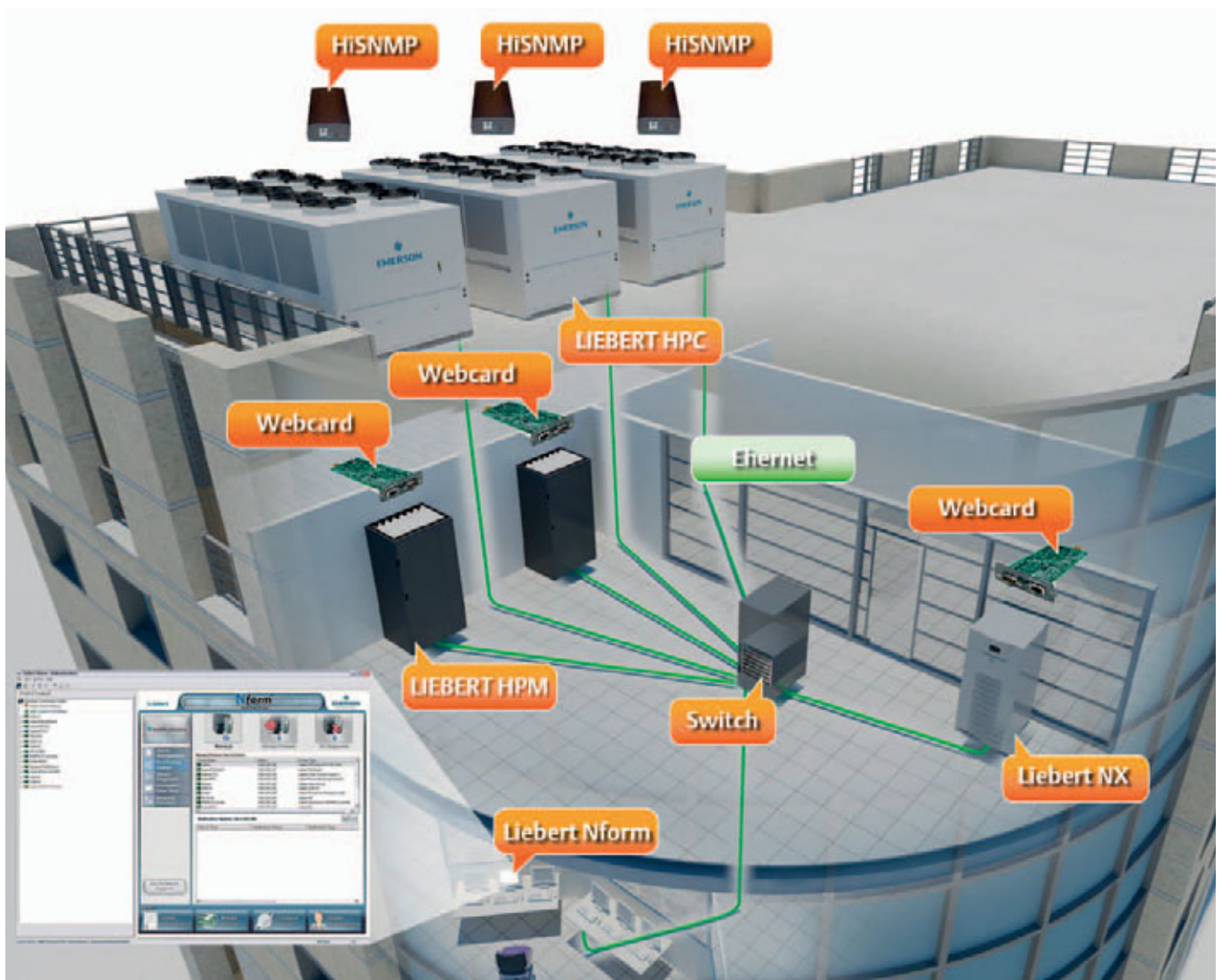
user manual on disk
manuale dell'utente sul disco
benutzerhandbuch auf platte
manual del usuario en disco
manuel de l'utilisateur
sur le disque

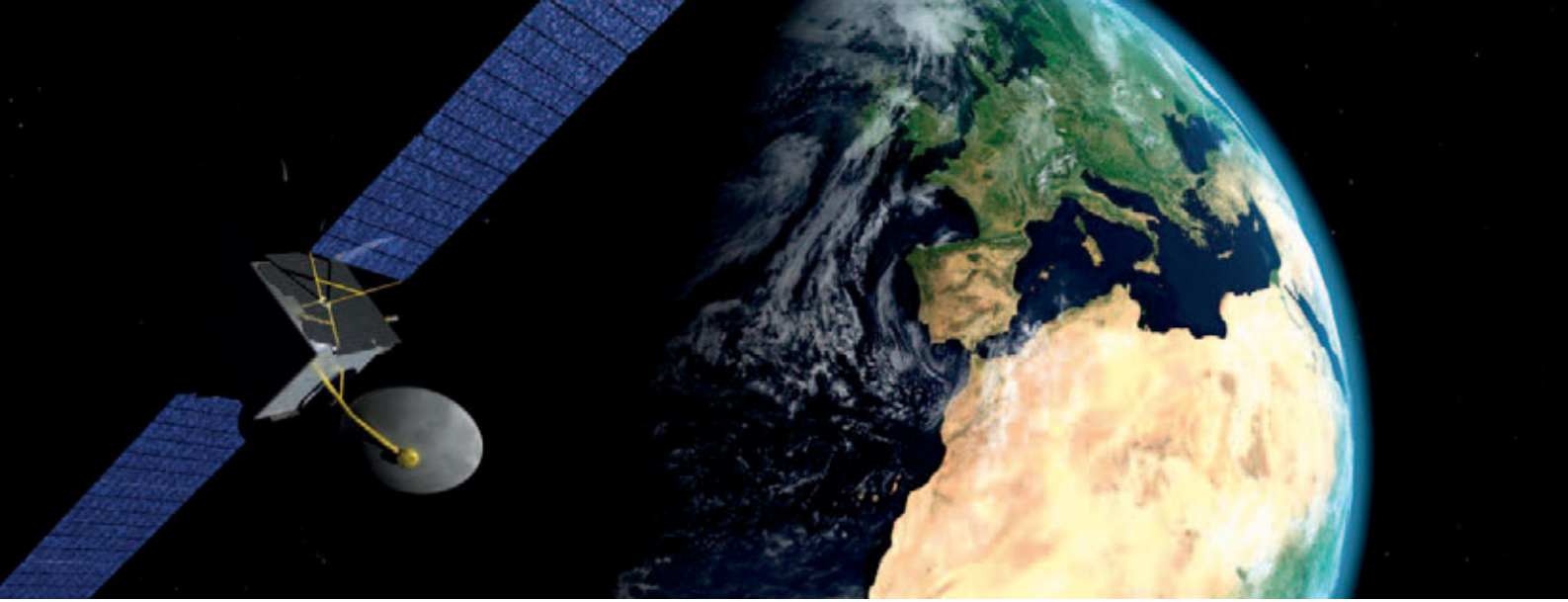
Part No. NFORM-ENT
Enterprise Edition

©2009 Liebert Corp



SUITABLE FOR COOLING POWER





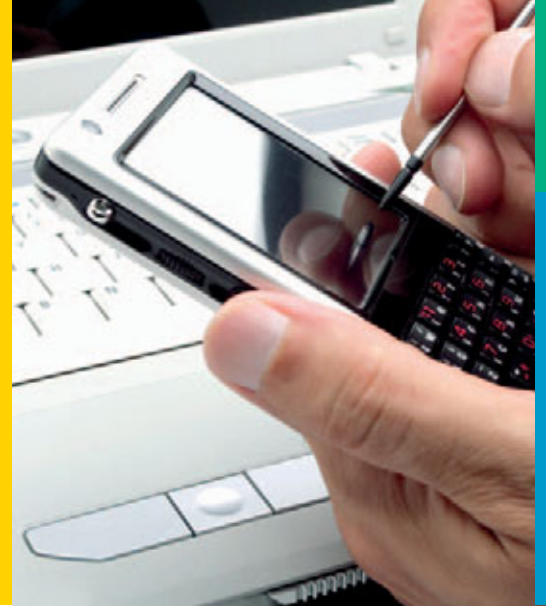
Liebert SiteScan Web Large-Scale Centralized Monitoring and Control

Management At Maximum Level Without Compromise

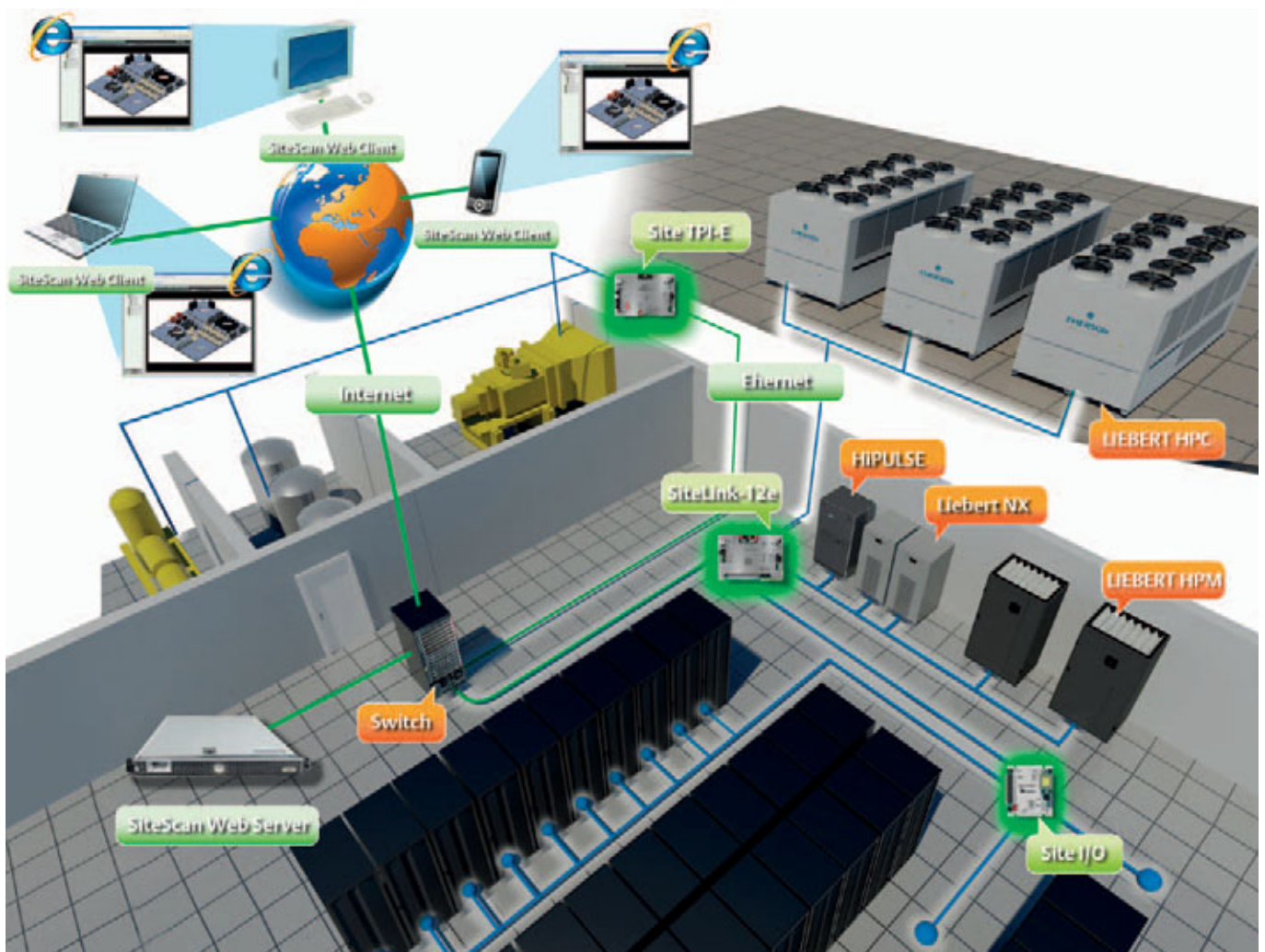
The more complex your boat is to govern, the higher the number of different instruments you need is. This is the reason why a single console allowing you to both monitor and control your instruments at the same time is fundamental to govern your boat easily and successfully. The higher the amount of information you have, the more effective your decisions are.

Liebert SiteScan Web allows you to monitor and control virtually any piece of critical support equipment - whether it's located in the next room or in a facility on the other side of the country. The web-based system provides centralized oversight of Liebert precision air, power and UPS units, as well as many other analog or digital devices. Features include real-time monitoring and control, data analysis and trend reporting, and event management. Provides a quick visual overview of how equipment are performing, with the ability to customize the visual representation to make it meaningful for the potential users. Fully configurable to allow measurement of the key business metrics (key performance indicators) that you define.

Liebert SiteScan Web provides comprehensive monitoring and control of your critical facility support systems-and lets you do it from virtually anywhere in the world.

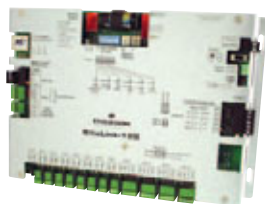


SUITABLE FOR COOLING POWER





Connectivity Interfaces



Output to Building Management Systems using Modbus and BACnet MSTP.

SiteLink modules integrate 4 or 12 Liebert units into a single device. The SiteLink has the ability to stand alone and act as a Modbus or BACnet slave through either a EIA-232 or EIA-485 (2-wire or 4-wire) configurable port. BACnet over IP can be accomplished tby adding a SiteGat. See the Advanced Monitoring Solution section for more details.



Input from non-Liebert units that use Modbus, BACnet and other non-standard protocols.

The site TPI-product can be used to intelligently communicate to non-Liebert units within your infrastructure. This allows you to effectively monitor critical equipment with the SiteScan Web. See the Advanced Monitoring Solution section for more details.



Output to Building Management Systems using Modbus over EIA-485. Output to Network Management Systems using SNMP and Web.

The Liebert Intellislot 485 card with adapter provides SiteScan Web or Building Management Systems monitoring and control of your UPS. The card delivers Modbus or Liebert's Proprietary protocol via EIA-485 port.

The Liebert Intellislot Web/485 Card with Adapter bridges the gap between Network and Building Management Systems with its ability to communicate to BMS systems with Modbus, as well as communicating to NMS systems through SNMP and Web. All interfaces can operate concurrently.



Output to Network Management Systems using SNMP and Web.

The Liebert Intellislot Web Card communicates to Network Management systems SNMP. As the namen interfers, the card also produces a Web page whic allows users to get a rel-time data through their internet browser.



What Do You Need to Monitor

No matter what Liebert product you have... we have a way for you to monitor that product. Liebert offers a full range of monitoring and control solutions to complement your Liebert UPS, power conditioning, power distribution or environmental control systems. Find your Liebert products on this chart to see which specific monitoring methods are available. Once you know your monitoring options, you can then select the system that best fits your specific needs based on the type and depth of information required by the various functions within your organization. Each monitoring solution will guide you to a section of the brochure for specific product information.

	Automated Shutdown Software	Simple Monitoring	Local and Remote Monitoring Panels	Fundamental Monitoring	Advanced Monitoring	Third Party Systems
PRODUCTS	Liebert Multilink	Liebert SiMon	Liebert iCOM Display	Liebert Nform	Liebert Sitescan Web	Snmp/Web and 485 Modbus Cards
UPS						
LiebertPowerSure PSP	•					
Liebert PowerSure PSA	•			•	•	•
Liebert PowerSure PSI	•			•	•	•
Liebert GXT2	•			•	•	•
Liebert NX	•			•	•	•
Liebert Hipulse	•			•	•	•
Power Distribution						
Liebert STS2				•	•	•
Liebert MSS				•	•	•
Precision Cooling Units						
HPM		•	•	•	•	•

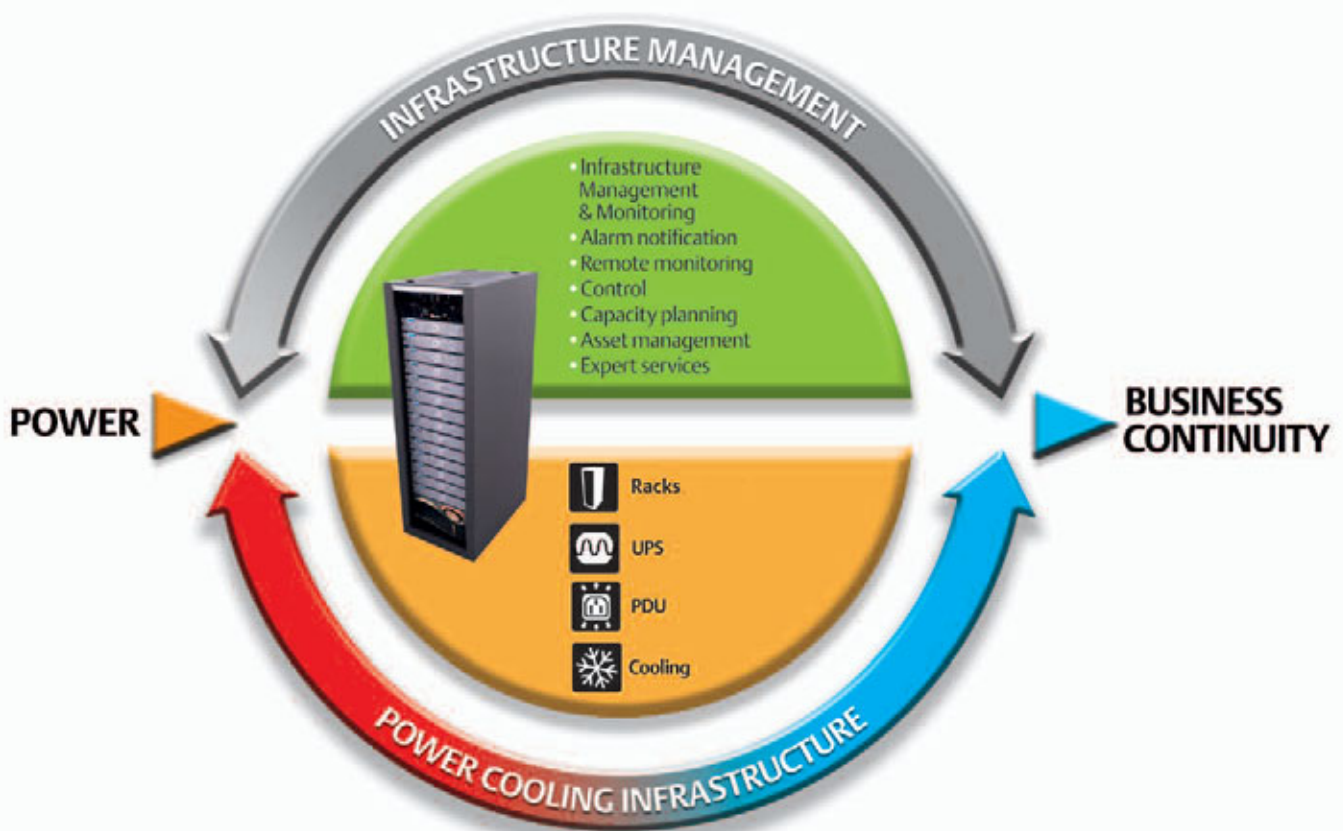
Building Management System Interfaces

Building Management Systems maintain a vital role on overall operations of facilities and buildings. Simply stated, Building Management Systems (BMS) create and maintain controlled, energy-efficient environments for all types of premises. This includes the management and monitoring of core aspects of each facility, from power supply, temperature, and humidity, to fire, access and security. Generally speaking, most BMS systems contain the ability to communicate to Modbus and or BACnet devices. These languages or protocols are considered “Open” from the standpoint that they do not require special tools in order to integrate these devices into a BMS system.

Network Management System Interfaces

One of the main purposes of deploying a Network Management System (NMS) is to maintain data availability. This includes access to data and applications vital to business critical operation. One of the key elements of an NMS operation is that devices or units reside on a network infrastructure. All of the devices that reside on the network require space and manageability in order for professionals to successfully manage the entire network.

Emerson Network Power Business-Critical Continuity™ Expert



Today's successful businesses depend on adaptable technologies to help them respond quickly to market demands. Your data center must be built on a support infrastructure designed to match the power and cooling needs of rapidly changing IT initiatives such as virtualization and consolidation. Each IT change, move or addition will affect the entire support infrastructure so you need products and support that ensure your IT systems will operate reliably in these environments.

Get More on line: www.eu.emersonnetworkpower.com



More than 35,000 organizations in 70 countries depend on our Business - Critical Continuity™ Promise: your IT infrastructure stays up to support your Business!

Ensuring The High Availability Of Mission-Critical Data And Applications.

Emerson Network Power, a business of Emerson (NYSE:EMR), is the global leader in enabling *Business-Critical Continuity™* from grid to chip for telecommunication networks, data centers, health care and industrial facilities. Emerson Network Power provides innovative solutions and expertise in areas including AC and DC power and precision cooling systems, embedded computing and power, integrated racks and enclosures, power switching and controls, infrastructure management, and connectivity. All solutions are supported globally by local Emerson Network Power service technicians. Liebert AC power, precision cooling and monitoring products and services from Emerson Network Power deliver Efficiency Without Compromise™ by helping customers optimize their data center infrastructure to reduce costs and deliver high availability.

For more information, visit:

www.Liebert.com, www.EmersonNetworkPower.com

or www.Eu.EmersonNetworkPower.com

Contacts:

Emerson Network Power has a worldwide network of Sales Representatives Offices and Distributors.

To get the list of the nearest in your country, send an e mail to:

Liebert.emea@emerson.com

While every precaution has been taken to ensure the accuracy and completeness of this literature, Liebert Corporation assumes no responsibility and disclaims all liability for damages resulting from use of this information or for any errors or omissions.

©2010 Liebert Corporation

All rights reserved throughout the world. Specifications subject to change without notice.

MONEM-BRO-EN-0910-01

Emerson Network Power™

The global leader in enabling Business-Critical Continuity™.

- | | | | |
|----------------|--|------------------------------|-------------------------------|
| ■ AC Power | ■ Embedded Computing | ■ Outside Plant | ■ Racks & Integrated Cabinets |
| ■ Connectivity | ■ Embedded Power | ■ Power Switching & Controls | ■ Services |
| ■ DC Power | ■ Infrastructure Management & Monitoring | ■ Precision Cooling | ■ Surge Protection |

Emerson, Business-Critical Continuity and Emerson Network Power are trademarks of Emerson Electric Co. or one of its affiliated companies. ©2010 Emerson Electric Co.

Locations

Emerson Network Power - Headquarters EMEA

Via Leonardo Da Vinci 16/18

Zona Industriale Tognana

35028 Piove di Sacco (PD) Italy

Tel: +39 049 9719 111

Fax: +39 049 5841 257

marketing.emea@emersonnetworkpower.com

Emerson Network Power - Service EMEA

Via Leonardo Da Vinci 16/18

Zona Industriale Tognana

35028 Piove di Sacco (PD) Italy

Tel: +39 049 9719 111

Fax: +39 049 9719 045

service.liebert.emea@emerson.com

United States

1050 Dearborn Drive

P.O. Box 29186

Columbus, OH 43229

Tel: +1 614 8880246

Asia

7/F, Dah Sing Financial Centre

108 Gloucester Road, Wanchai

Hong Kong

Tel: +852 2572220

Fax: +852 28029250

Emerson Network Power Srl- ISO 9001:2008.
Design, manufacturing, assembling and sales of chilled water
mixture and equipment for high precision air conditioning.
Sales of small uninterruptible power supply (UPS Small and Micro)



Emerson Network Power Srl-ISO 14001:2004:
Design, manufacturing, assembling and sales of chilled water
mixture and equipment for high precision air conditioning.
Sales of uninterruptible power supply (UPS Power). Design
of uninterruptible power supply (UPS Power). Sales of small
uninterruptible power supply (UPS Small and Micro). HQ Service
Activities (Spare parts warehouse, Technicians training)

